

## BYD Design

Technology is central to BYD's DNA, and the company's strong R&D ability is vital to its rapid development. Following its "technology-based, innovation oriented" development philosophy, BYD believes that technology has the power to change people's lives and make better the world we live in. BYD has successfully built a world-class platform for technological innovation on which world leading, BYD-inspired advanced technologies are continuously proven before introduction across many fields.

## BYD Commercial Vehicle

BYD's dedicated Truck Research Institute is mainly engaged in the R&D and design of the whole vehicle and chassis for pure electric trucks and special vehicles designed for use in logistics, construction, sanitation and port operations.



## 19T Pure Electric Rigid Truck — ETH8

### Technical Data

Overall Dimension (L/W/H)	mm	8,160/2,530/3,280	10,500/2,530/3,280
Curb Weight	kg	7,800	8,100
G.V.W.	kg	19,000	19,000
Payload	kg	11,200	10,900
Wheelbase	mm	4,500	5,700
Front/Rear Overhang	mm	1,600/2,060	1,600/3,200
Max. Speed	km/h	90	90
Max. Gradeability	%	30	30
Range*	km	200 (Full load)	200 (Full load)
Driving Mode		4×2	4×2
Tyres		295/80 R22.5	295/80 R22.5
Max Motor Power	kW	180	180
Max. Torque	N·m	450	450
Battery Type		LiFePO4	LiFePO4
Battery Capacity	kWh	255	255
Charging Power**	kW	DC 120	DC 120
Charging Time	h	DC 2 (SOC 20%~100%)	DC 2 (SOC 20%~100%)

\*Actual range will vary depending upon driving/charging habits, speed, conditions, weather, temperature and battery lifecycle etc.

\*\*The battery capacity is initial capacity. It will decrease with the time and use.

### BYD Europe B.V.

Schiedam, The Netherlands

☎ +31 (0)10 2070888 ✉ sales.europe@byd.com

BYD reserves the right to make modifications to vehicle information without prior notice. 0622-BPS-V3



bydtrucks.com



**ETH8**  
BYD eTruck. Carrying a better future



### 1. BYD Iconic X Frontface

BYD's innovative X Face design and Diving waistline style not only convey the dynamic aesthetic of the technology but also have practical benefits by optimizing efficiency and range as well.

### 2. Angel Eyes LED Headlights

These facilitate greater driver visibility with low energy consumption.

### 3. Integrated Powertrain

BYD's drive motor, transmission and drive axle are fully integrated with each other to deliver an outstanding transmission efficiency of more than 90% and in turn lower energy consumption.

### 4. Reversing Radar

The 360° omni-directional vision provides the driver with excellent situational awareness.

### 5. Charging Port

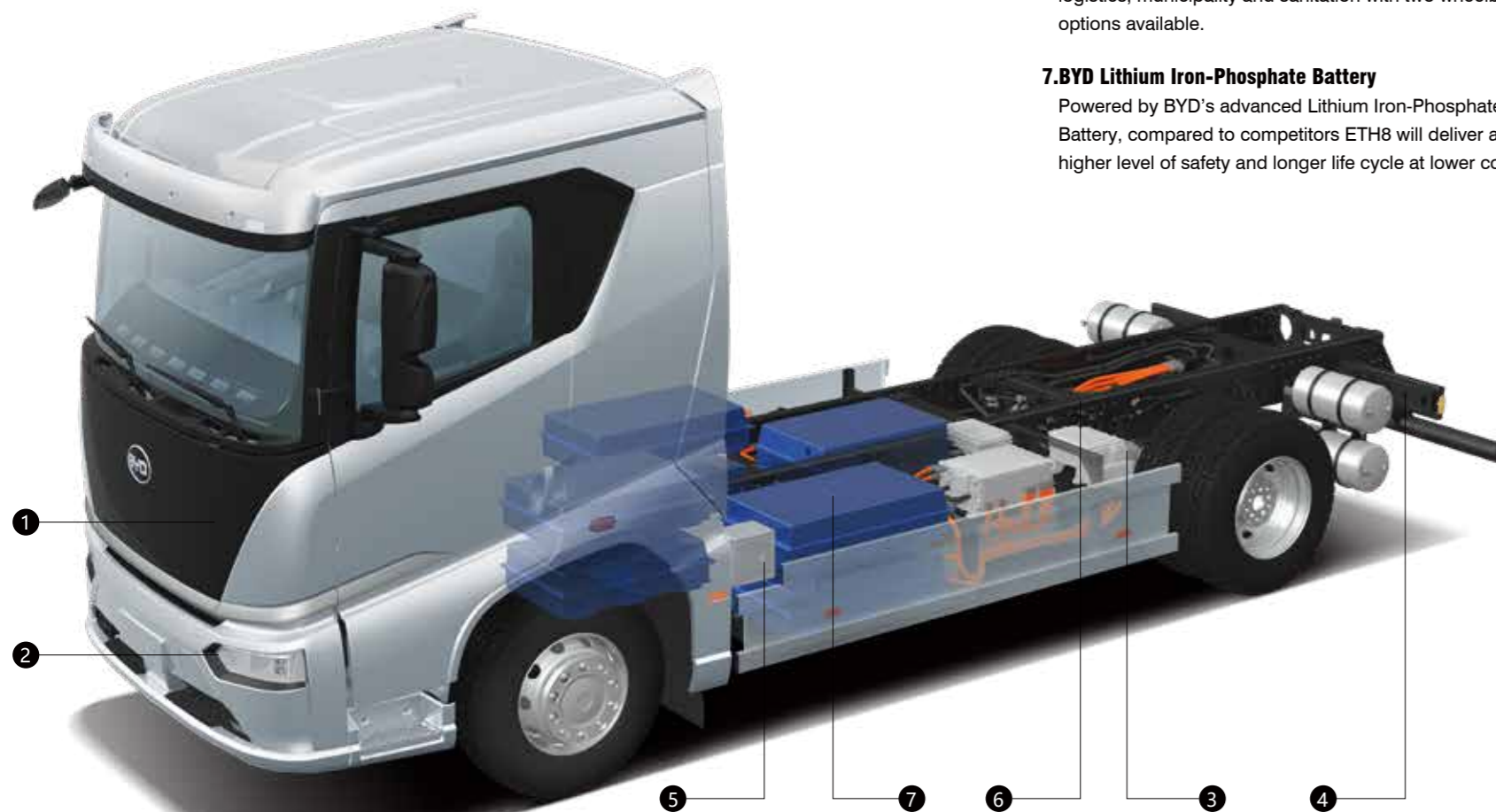
Various charging solutions can be deployed for maximum convenience. DC fast charging is possible up to 120kw.

### 6. Multipurpose Chassis

Featured with platform-designed chassis layout, ETH8 can be developed for diverse usage like construction, logistics, municipality and sanitation with two wheelbase options available.

### 7. BYD Lithium Iron-Phosphate Battery

Powered by BYD's advanced Lithium Iron-Phosphate Battery, compared to competitors ETH8 will deliver a higher level of safety and longer life cycle at lower cost.



- 1. Multifunction Steering Wheel
- 2. 8-inch TFT Dash Board
- 3. Push to Start

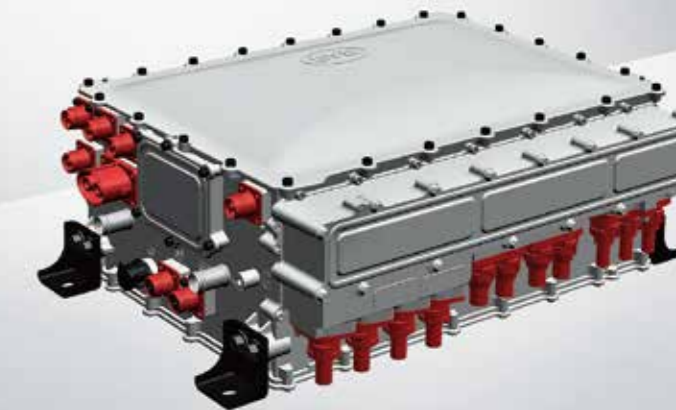
- 4. 10.1-inch Hover LED Display Screen
- 5. EHPS (Electro Hydraulic Power Steering)
- 6. Economy/Power Driving Mode Option

- 7. Ergonomic Driving Seats
- 8. Storages
- 9. Berth

## 5 in 1 Highly Integrated Controller

Thanks to its cutting-edge integration technology, BYD developed the revolutionary 5 in 1 motor controller which consists of MCU (Motor Control Unit), PDU (Power Distribution Unit), DC-DC converter, steering controller and ACU (Air Compressor Unit). These five components are integrated into one single compact module and enhanced the efficiency, reliability and ease of maintenance.

- Optimized performance
- High efficiency
- Cost savings
- Easy maintenance
- Compact structure
- Light weight



## BYD Iron-Phosphate Battery

### Eco-friendly

Contains no heavy metals or toxic electrolytes and can be easily recycled.

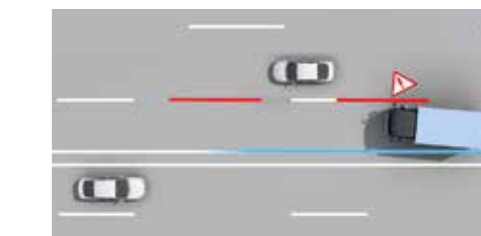
### Long Service Life

7 security dimensions, 5 safety evaluation verifications, 4 battery security system levels.

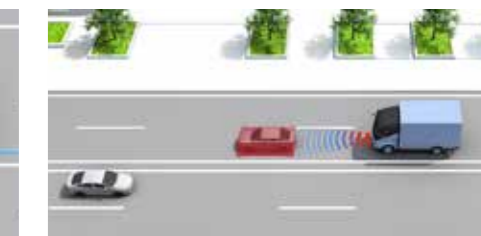
### High Stability and Performance

Proven by numerous in-depth tests during the R&D phase.

## Advanced Driver Assistance Systems (ADAS)



LDW (Lane Departure Warning System)



FCW (Forward Collision Warning)



ACC (Adaptive Cruise Control)



AEBS (Advanced Emergency Braking System)